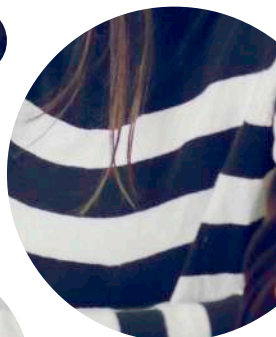
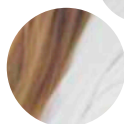


Postgraduate programs at the Faculty of Education and Humanities

English Language and Literature Department

IBU | International
Burch
University

mell.ibu.edu.ba



www.ibu.edu.ba



ABOUT

The Department of English language and literature at International Burch University has always been strong, award-winning teaching department, committed to the symbiotic relationship of teaching, research, and the larger concerns of the society.

Postgraduate studies at this department offer an alternative to more traditional humanities-based similar studies by providing a unique combination of subject expertise and employability activities not offered elsewhere.

MA THESIS PROGRAMS

4+1/3+2

PhD THESIS PROGRAMS

4+1+3/3+2+3

MISSION

The department members bring their interdisciplinary interests to their courses, addressing various areas such as:

- *linguistics and literature and their relationship with other arts, sciences, history and philosophy;*
- *the nature of literary language;*
- *language acquisition processes;*
- *an in-depth analysis of scientific research methods*

AIMS

This graduate program aims to:

- *professionally empower students through their active involvement in academic conferences and scholarly publications;*
- *motivate students to increase the knowledge of their field by contributing original work;*
- *enhance students' awareness of the cultural contexts of theoretical and literary works;*
- *provide rhetorical skills in preparation for different professions, such as teaching, law, publishing, and public relations.*

SUBMISSION REQUIREMENTS MA PROGRAMS

The applicants who have completed the first cycle study are eligible for the admission to the second cycle study. The applicants' level of English knowledge is evaluated according to the result of the IBU English Proficiency Examination (IBU EPE) or according to the equivalent results of English language proficiency exams.

GRADUATION REQUIREMENTS:

- **Pass all the courses determined by the study program**
- **Complete their Master's thesis**
- **Complete a publication requirement for thesis program**

Students who obtain 60 ECTS credits (4+1 study program)/ 120 ECTS credits (3+2 study program) will be eligible for the title of 'The Master of Art in English Language and Literature.'



PhD PROGRAMS

The applicants who have completed the second cycle study are eligible for the admission to the third cycle study. The applicants' level of English knowledge is evaluated according to the result of the IBU English Proficiency Examination (IBU EPE) or according to the equivalent results of English language proficiency exams.

GRADUATION REQUIREMENTS:

- **Pass all the courses determined by the study program**
- **Complete their doctoral thesis**
- **Complete a publication requirement for thesis program**

Students who obtain 180 ECTS credits will be eligible for the title of 'The PhD in English Language and Literature.'

We offer MA/PhD in three major domains:

- **Theoretical Linguistics**
- **Applied Linguistics**
- **English Literature**



JOB OPPORTUNITIES AND INTERNSHIPS

Some of the fields that are most popular among English majors include:

- **Teaching Experience**
- **Publishing/Editing**
- **Translation and Interpretation**
- **Journalism**
- **Higher education administration**
- **Government**

DISTANCE LEARNING

We also offer Distance Learning (DL) programs to our MA students. DL is a formalized system of education in which students are using computer technology and interactive teaching materials that provide access to educational processes.

What skills are earned at M.A. in English Language and Literature?

- **Reasoning**
- **Comprehension**
- **Philosophical understanding**
- **Creative thinking**
- **Reading proficiency**
- **Communication**

EXCHANGE

We offer various exchange programs to our students and provide opportunities for applying to some of the most prestigious scholarship programs, such as Erasmus+, Fulbright Scholarships etc.





CONTACT INFO

Name and Surname:

Assistant professor Amna Brdarević Čeljo

Title:

Head of the Department of English language and literature

E-mail:

amna.brdarevic.celjo@ibu.edu.ba

Tel: 033/944 445

Name and Surname:

Assistant professor Ayse Dinc

Title:

Head of the Department of Turkish language and literature

E-mail:

ayse.dinc@ibu.edu.ba

Tel: 033/944 485

INTERNATIONAL BURCH UNIVERSITY

Francuske revolucije bb | 71210 Ilidža Sarajevo | Bosnia and Herzegovina

+387 33 944 400 | +387 62 295 072

info@ibu.edu.ba | admission@ibu.edu.ba

For more information, please visit our website at www.prospective.ibu.edu.ba